

SPECIFICATIONS

Data Memory:

512KB Serial Flash EPROM

Events Recorded:

100,000 events

Resolution:

1 Second

Software:

WinComLog or HyperTerminal

Cable:

RS232 Port,(Tx, Rx)

Battery Type:

1 x 3.5V Lithium battery

Battery Life:

Up to 10 years in field

Dimensions:

65x 60x 40 mm

Weight:

200 Grams

ML1 Mini Log

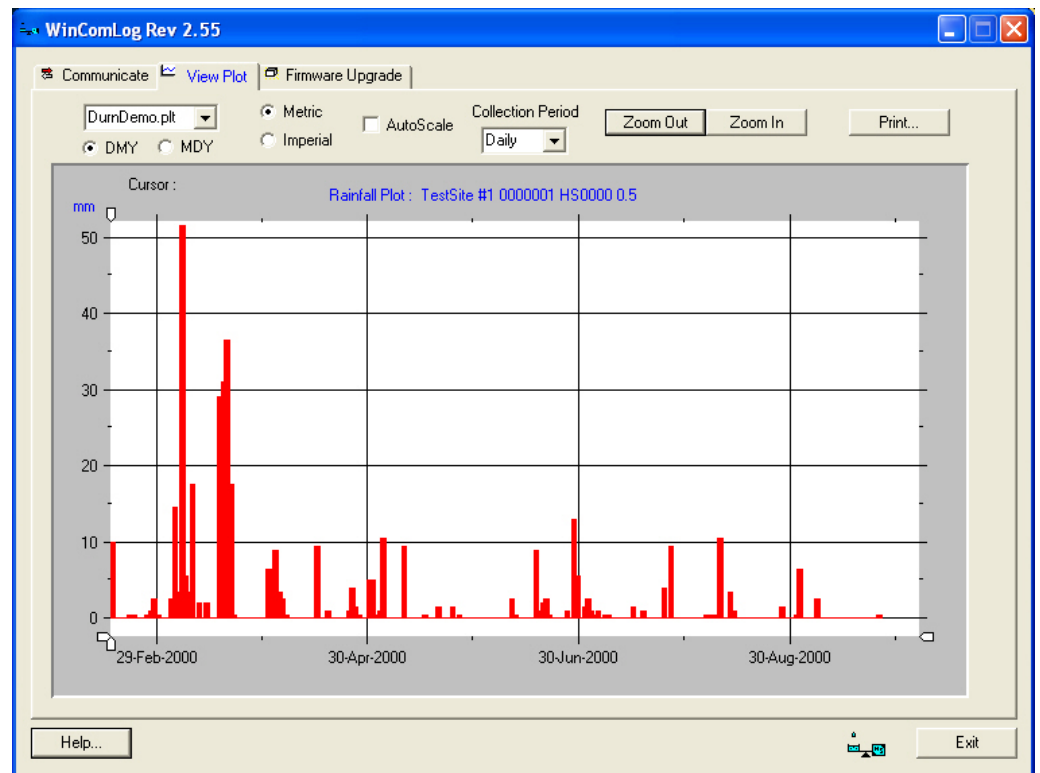
The ML1 is an ideal one channel data logger for recording rain fall events from tipping bucket rain gauges, pulses from water meters, or other similar applications. Very low power consumption and a robust aluminium waterproof housing allow this logger to be deployed in the field for up to ten years in remote locations.

Events are stored in the memory, which can then be downloaded to a PDA, laptop or desktop computer, using either WinComLog to download and graph data, or HyperTerminal to download data for use in Excel. An RS-232 serial port allows the direct connection of the ML1 to a computer on site.



Features:

- Small and Compact
- Low power consumption
- Memory Wrap for continuous logging



ICT International Pty Ltd

PO Box 503
Armidale NSW 2350
AUSTRALIA

Ph: [61] 2-6772-6770

Fax: [61] 2-6772-7616

sales@ictinternational.com.au

www.ictinternational.com.au